



High School & Middle School Parking Lot Procedures (Drop-off/pick-up)

HS:

Drop-off/pick-up procedures for the MS/HS campus. Parents dropping off high school (HS) students will drive up towards the high school (HS) in the left lane, merging to the right lane as you enter the HS parking lot in order to drop students off. HS student drop-off is in front of the gym in the HS parking lot. There will be cars stopping in front of you as part of the process. Be patient and have your student remain in your car, ready to disembark, until you reach the drop-off area. If your student is not prepared to exit your vehicle, please take a lap so others may drop their student off in a timely manner while your student prepares to exit your vehicle. If your student is driving and exchanging places with you, please park in a visitor parking spot so others may use the drop-off area. **Do not exit your car to switch drivers with a passenger in the drop-off lane.**

The left lane is for drivers proceeding to the HS parking lot; **do not stop in the left lane, and do not exit your car.** Please do not enter the building with your student. We kindly ask you to follow these instructions to keep things safe and flowing smoothly.

For pick-up at the end of school, procedures are similar to the drop-off procedures in the morning; however, buses will be parked in front of the gym at the end of school. **Please park behind** the busses; once you have received your student, please merge into the left lane to exit the parking lot. Do not exit your car. A staff member will be directing traffic after school, so please be aware and adhere to their direction.

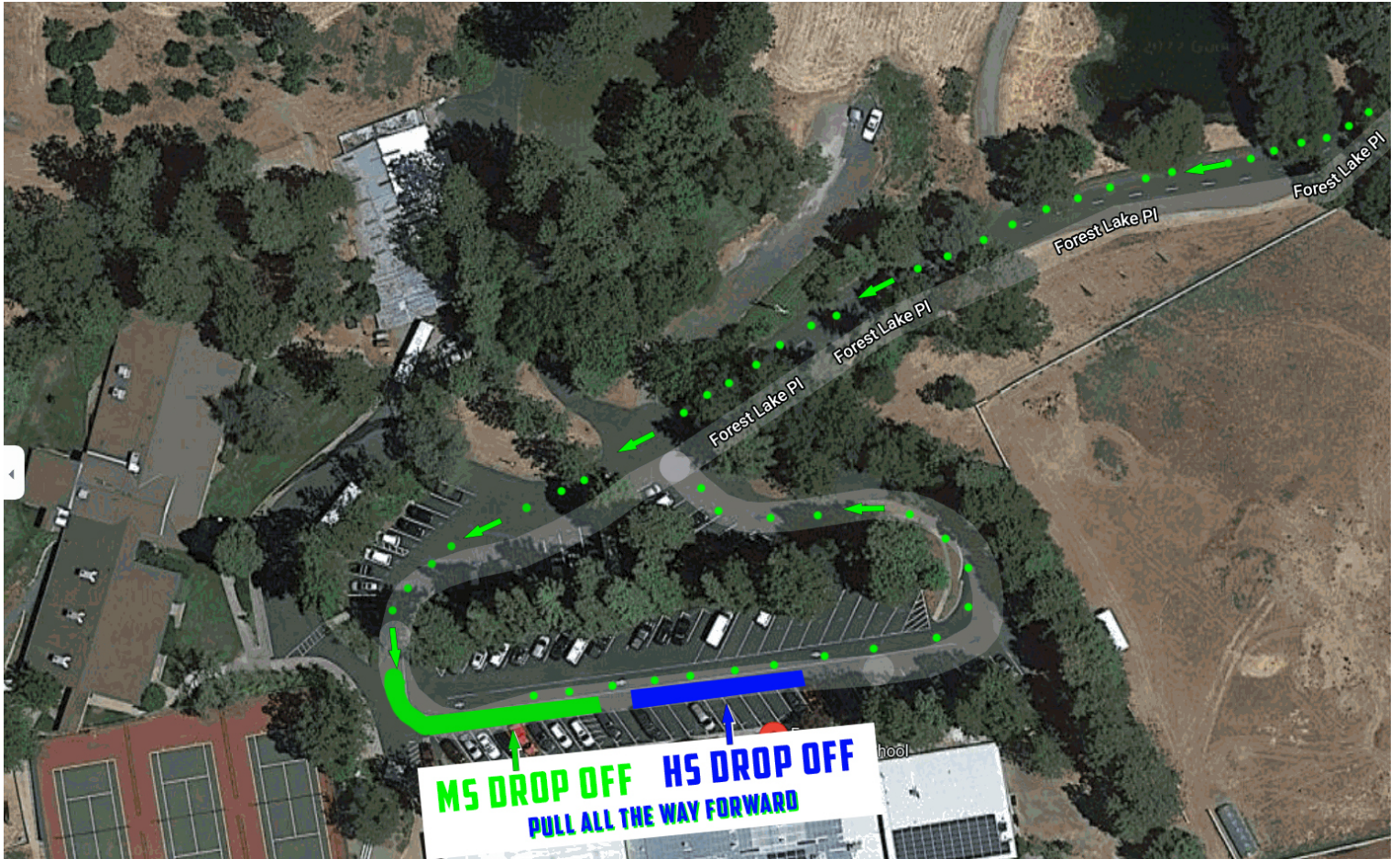
MS:

Drop-off/pick-up procedures for the MS/HS campus. Parents dropping off middle school (MS) students will drive up towards the high school (HS) in the right lane and drop students off from the right lane as they enter the HS parking lot. Pull off to the right just before completing the turn into the parking area. There will be cars stopping in front of you as part of the process. Be patient and have your student remain in your car, ready to disembark, until you reach the drop-off area. If your student is not prepared to exit your vehicle, please take a lap so others may drop their student off in a timely manner while your student prepares to exit your vehicle.

The left lane is for drivers proceeding to the HS parking lot; **do not stop in the left lane, and do not exit your car.** Do not enter the bus lanes for drop-off at any time. The bus area must be kept clear for bus arrivals and student safety. Please do not enter the building with your student this year as we will be concentrating on our student entry protocols. We kindly ask you to follow these instructions to keep things safe and flowing smoothly.

For pick-up at the end of school, procedures are slightly different than in the morning. You enter the drive-through area closest to the MS steps at the end of school. This is the bus area. Your students will be waiting for you on the upper walkway/ramp and ready for pick-up when the buses leave. Please be aware of the times you may use this area; a sign is posted regarding the hours. Your student will come to your car as you pull to the ramp area. **Do not exit your vehicle.** Please be aware of other cars as you merge with those driving in the HS parking lot.

Middle & High School Drop Off Map



Middle & High School Pickup Map

